

092306T4SWC

SOCIAL WORK AND COMMUNITY DEVELOPMENT LEVEL 6

COD/OS/SW/CR/01/6

Manage Community Resources

Nov/Dec 2023



**TVET CURRICULUM DEVELOPMENT, ASSESSMENT AND CERTIFICATION
COUNCIL (TVET CDACC)**

WRITTEN ASSESSMENT

Time: 3 Hours

INSTRUCTIONS TO CANDIDATES

1. This paper has two sections; **A** and **B**.
2. You are provided with a separate answer booklet.
3. Marks for each question are as indicated.
4. Do not write on the question paper.

This paper consists of 4 printed pages.

Candidates should check the question paper to ascertain that all pages are printed as indicated and that no questions are missing

SECTION A: (40 MARKS)

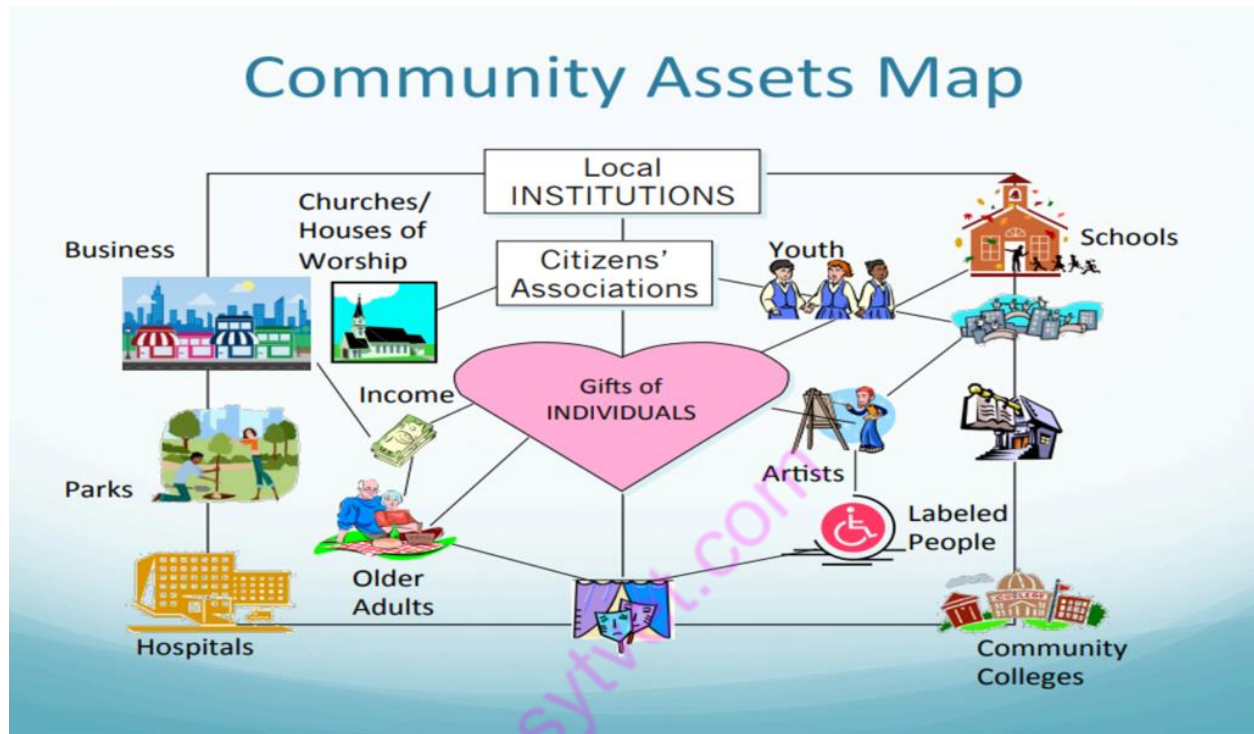
Answer all questions in this section.

1. List FOUR types of social infrastructure resources necessary for the well-being of a community. (4 Marks)
2. Identify FOUR categories of people who should be involved in the development of a plan to assess community needs. (4 Marks)
3. List FOUR challenges that a community resources committee may face when planning for resource mobilization. (4 Marks)
4. List THREE reasons for the inclusion of a diverse population in community activities. (4Marks)
5. State THREE disadvantages of using observation as a tool for carrying out community needs assessment. (3 Marks)
6. Analyze FOUR factors that influence the ability of community members to mobilize resources (4 Marks)
7. State FOUR social consequences of over-exploitation of a community's natural resources (4 Marks)
8. Identify THREE indicators of an effective community resource management capacity-building exercise. (3 Marks)
9. Suggest FOUR ways of enhancing the sustainability of community resources by its members. (4 Marks)
10. State THREE strengths of utilizing transect walks by the community stakeholders during resource mapping. (3 Marks)
11. Name THREE factors to consider when matching community needs to available resources. (3 Marks)

SECTION B: (60 MARKS)

Answer any **three** questions in this section

12. You have been employed as a resource manager by Kazi Community. The local leaders have presented a community assets map below to your office for evaluation.



- a) Evaluate FOUR categories of resources available in Kazi Community. (8 Marks)
- b) Identify ONE resource gap in the community (2 Marks)
- c) Explain FIVE benefits of mapping resources to a community (10 Marks)

13. Kile, a social and community development worker at Piome community is in the process of monitoring the utilization of the community's resources.

- a) Describe FIVE components of the monitoring system that he will use.(10 Marks)
- b) Describe FIVE characteristics of a good community resource evaluation tool. (10 Marks)

14. The social action model is applied to mobilize community members to undertake activities that ensure effective utilization of their community resources.

- a) Discuss FIVE reasons why social workers may apply the model when organizing community members. (10 Marks)
- b) Discuss FIVE strategies that a community may use to diversify its economic resources. (10 Marks)

15.

- a) Discuss FIVE reporting mechanisms that can be developed by a community to highlight misuse of resources. (10 Marks)
- b) Explain FIVE reasons why it is important to develop a plan for assessing local needs and resources. (10 Marks)

easytvvet.com

This is the last printed page